

[View this email in your browser](#)



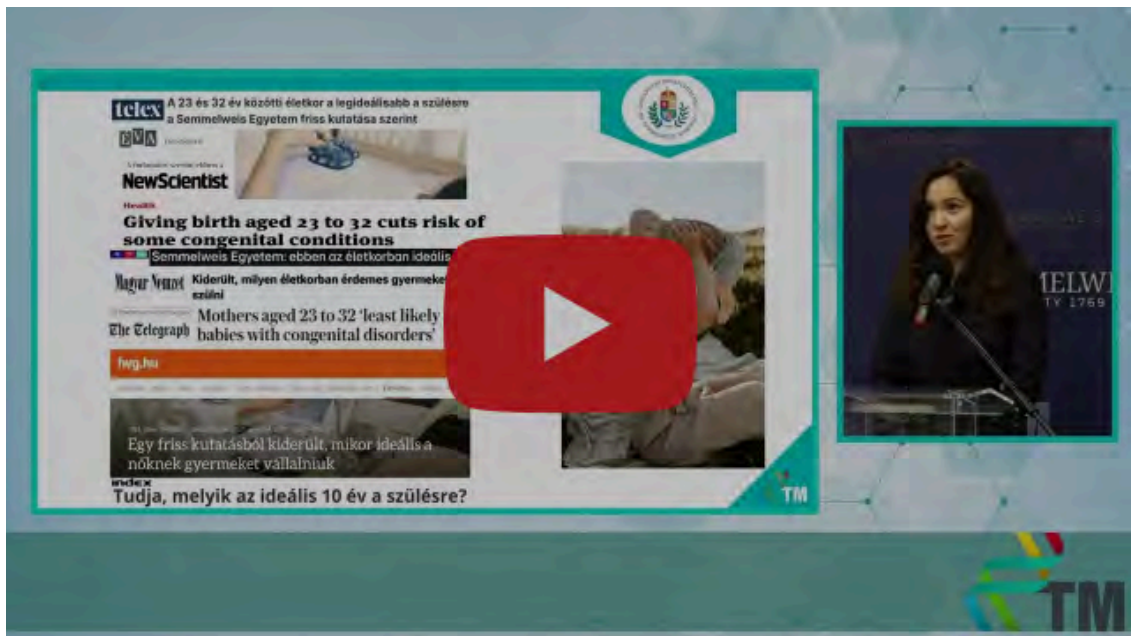
## PhD Defenses: Innovative Research from Semmelweis University

We are proud to spotlight the exceptional work of our PhD students, whose groundbreaking research was recently defended and recorded for you to explore:

- **Boglárka Pethő**

*Investigating the Role of Maternal Age in Non-Chromosomal Congenital Anomalies*

Boglárka's research delves into the impact of maternal age on congenital anomalies, providing insights that can improve prenatal care.

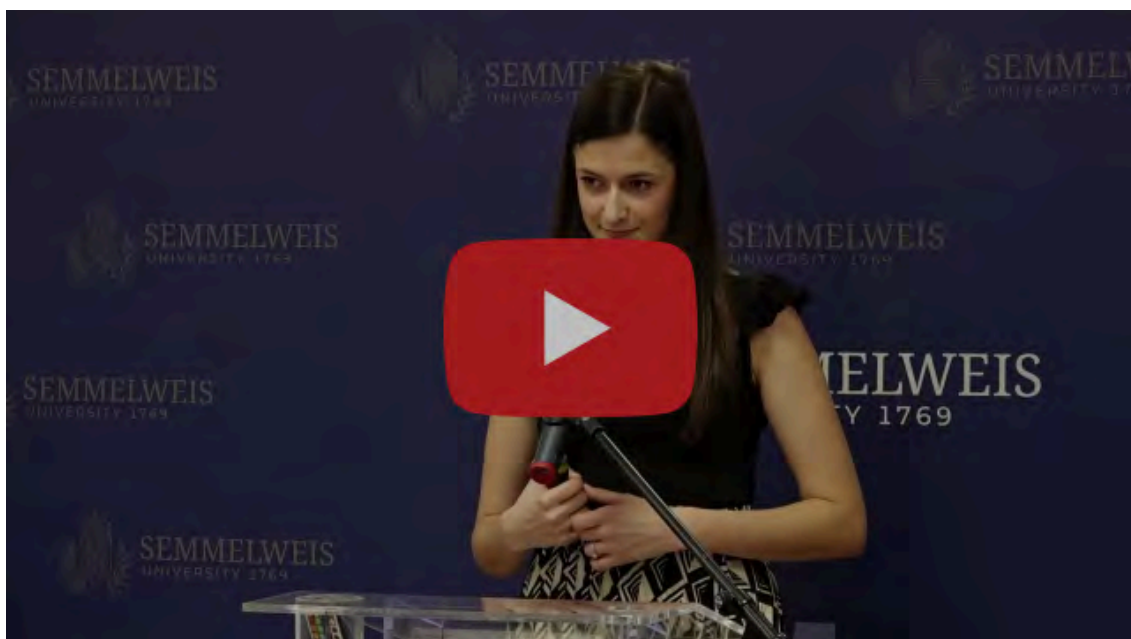


Public PhD Defence: Boglárka Pethó - Maternal Age & Non-Chromosomal  
Congenital Anomalies

- **Dorina Greff**

*Preconceptional, Gestational, and Postpartum Carbohydrate Metabolic Disorders*

Dorina's work sheds light on metabolic challenges during and after pregnancy, paving the way for better maternal health strategies.

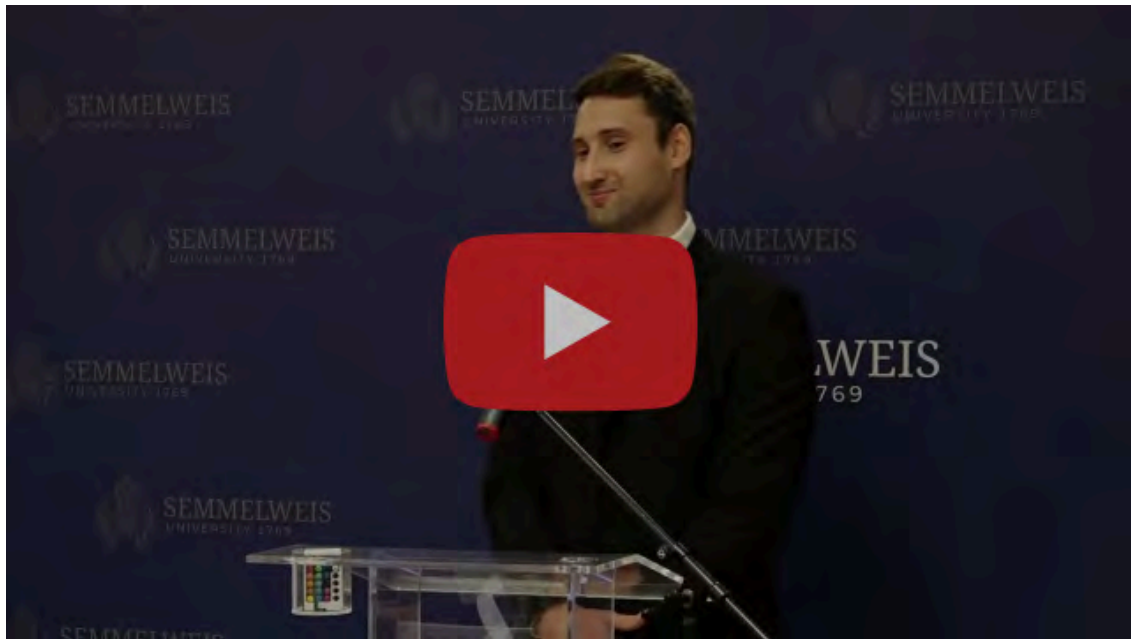


Public PhD Defence: Dorina Greff - Carbohydrate Disorders: Preconception,  
Gestation & Postpartum

- **Balázs Hamar**

*Cervical Pathology and Connections with Health and Clinical Factors*

Balázs explores the links between cervical pathology and clinical factors, with implications for improved cancer prevention protocols.

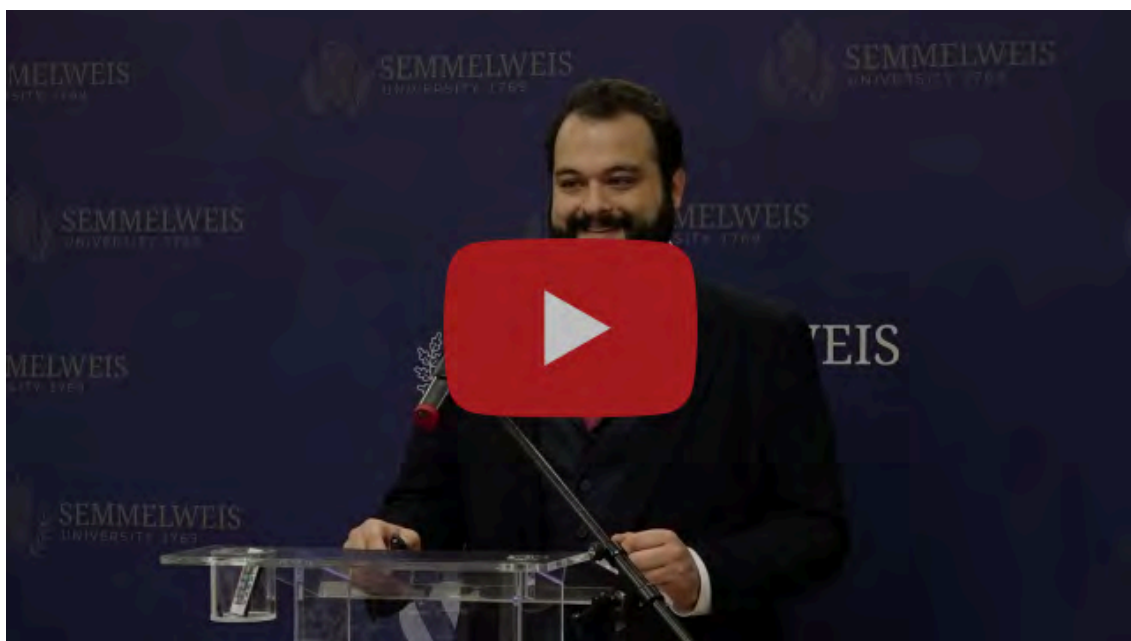


Public PhD Defence: Balázs Hamar - Cervical Pathology & Connections with Health and Clinical Factors

- **Caner Turan**

*Perioperative Management and Critical Care for Patients with Liver Dysfunction*

Caner presents innovative approaches to managing critical liver conditions perioperatively, advancing patient care practices.



Public PhD Defence: Caner Turan - Perioperative Management & Critical Care in Liver Dysfunction

---

We are excited to announce the latest recording in our Seminar Lecture Series, featuring **Professor Karl J. Oldhafer**, an esteemed expert in liver surgery. In his lecture, *Liver Surgery: In the Past – Today – In the Future*, Professor Oldhafer explores the fascinating journey of liver surgery through its historical roots, current innovations, and future potential.

The video is now available on our YouTube channel. We encourage you to watch and share this engaging lecture with your teams and networks.

Thank you for your continued support of the Seminar Lecture Series!







**PETRA VARGA**  
**STUDENT OF THE MONTH (YEAR 2-3)**

*Student of the Month (Year 2-3): Petra Varga*



“BOTH OF MY FIRST-YEAR STUDENTS ARE CONDUCTING RESEARCH THAT WILL HELP PHYSICIANS IN THE FUTURE”

**Gábor Duray**  
**Supervisor of the Month (Year 1)**

*Supervisor of the Month (Year 1): Gábor Duray*

„I WOULD LIKE TO CLARIFY HOW THE WORK OF PSYCHOLOGISTS CAN HELP THE THERAPY OF GASTROINTESTINAL DISEASES”

Zsófia Németh  
Ph.D. Student of  
the Month (Year 1)



*Ph.D. Student of the Month (Year 1): Zsófia Németh*

PSYCHOLOGICAL EFFECTS: IMPORTANT RESEARCH TOPICS IN BOTH DERMATOLOGY AND PEDIATRICS

Group of the Month:  
Dermatology-Pediatrics Group  
(Year-1)



*Group of the Month: Dermatology-Pediatrics Group (Year 1)*





“PROGNOSTIC  
ACCURACY IS  
CRUCIAL FOR  
IMPROVING  
PRECISION  
THERAPIES”

**Eszter Tuboly**  
Supervisor of the  
Month (Year 2-3)

*Supervisor of the Month (Year 2-3): Eszter Tuboly*



“THE MOST REWARDING PART OF BEING AN SMS  
IS REALIZING WE’RE GROWING ALONGSIDE OUR  
STUDENTS, NOT JUST GUIDING THEM”

**AMIR MAKOLLI**  
STAFF MEMBER OF THE MONTH

*Staff Member of the Month: Amir Makolli*





[Kónya, M. et al. \(2024\) Genome-Wide, Non-Invasive Prenatal Testing for rare chromosomal abnormalities: A systematic review and meta-analysis of diagnostic test accuracy](#)

PLoS One, **Q1**, **IF: 3.700**



[Ács, M. et al. \(2024\) Maternal factors increase risk of orofacial cleft: a meta-analysis](#)

Sci Rep, **D1**, **IF: 4.600**



[Domokos, Zs. et al. \(2024\) Evaluating salivary MMP-8 as a biomarker for periodontal diseases: A systematic review and meta-analysis](#)

Heliyon, **Q1**, **IF: 4.000**





[Csirzó, Á. et al. \(2024\) Comparative Analysis of Medical Interventions to Alleviate Endometriosis-Related Pain: A Systematic Review and Network Meta-Analysis](#)

J Clin Med, **Q1**, **IF**: 3.900



[Ehrenberger, R. et al. \(2024\) Modified Balloon Use After Rotational Atherectomy Reduces Major Adverse Cardiovascular Event Rates in Severely Calcified Coronary Lesions: A Systematic Review and Meta-Analysis](#)

J Clin Med, **Q1**, **IF**: 3.900



[Szigetváry, Cs. et al. \(2024\) Individualised Positive End-Expiratory Pressure Settings Reduce the Incidence of Postoperative Pulmonary Complications: A Systematic Review and Meta-Analysis](#)

J Clin Med, **Q1**, **IF**: 3.900



[Cavalcante, BGN. et al. \(2024\) Non-Invasive Strategies for Remineralization and Hypersensitivity Management in Molar–Incisor Hypomineralization—A Systematic Review and Meta-Analysis](#)

J Clin Med, **Q1**, **IF**: 3.900



**December 6**

[Seminar Lecture - Ole Petersen, Martin Chalfie, Shahrokh Shariat](#)

**December 10-12**

[Progress Report I](#)

I would like to unsubscribe

