

Translational Medicine

For better health care



Normál tüdőből ARDS-ig, avagy 80 óra a CPAP körül

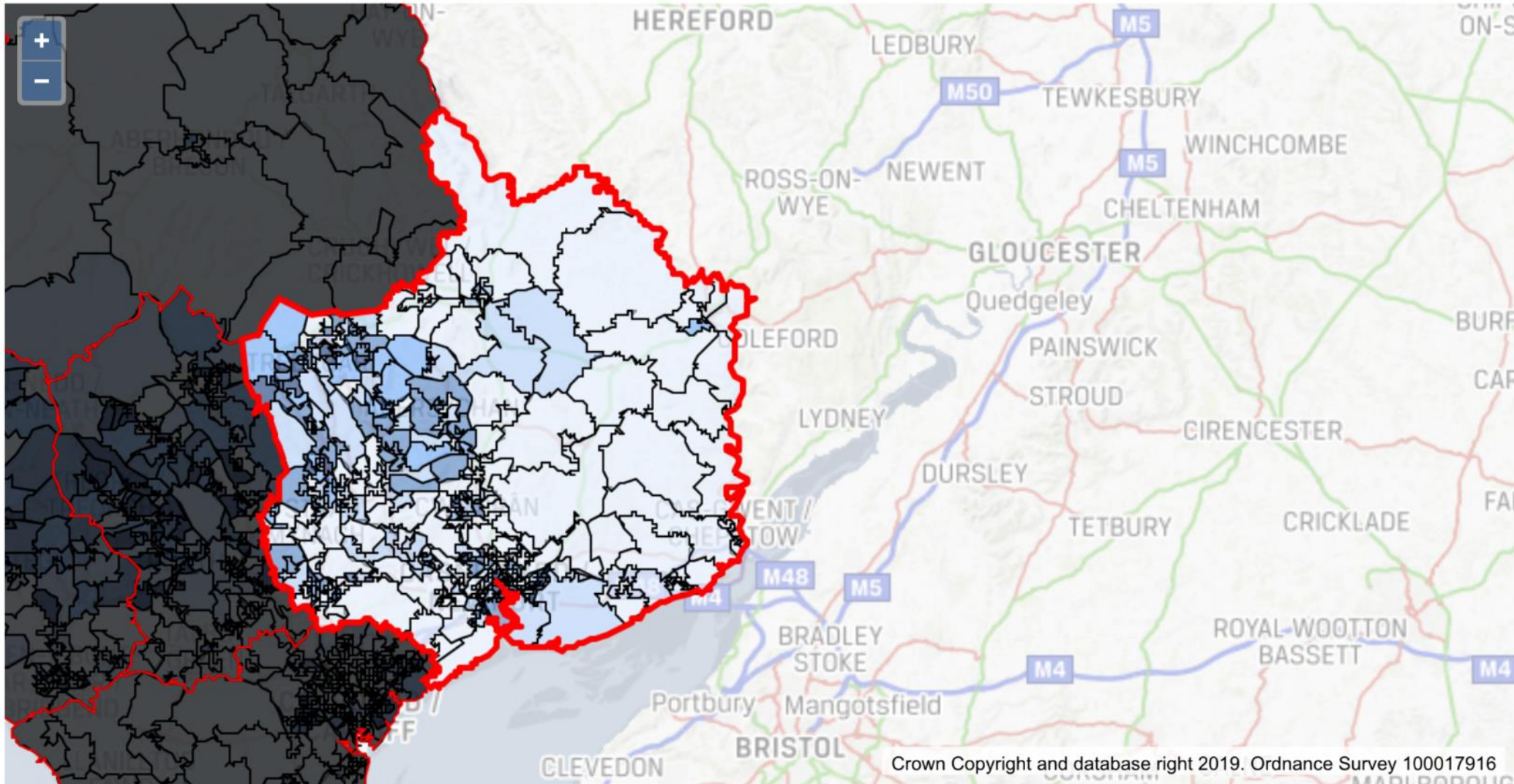
Szakmány Tamás

The logo for TM KETLAK features a stylized DNA double helix in shades of blue and green. To the right of the helix, the letters 'TM' are displayed in a bold, black, sans-serif font, followed by 'KETLAK' in a larger, bold, blue, sans-serif font.

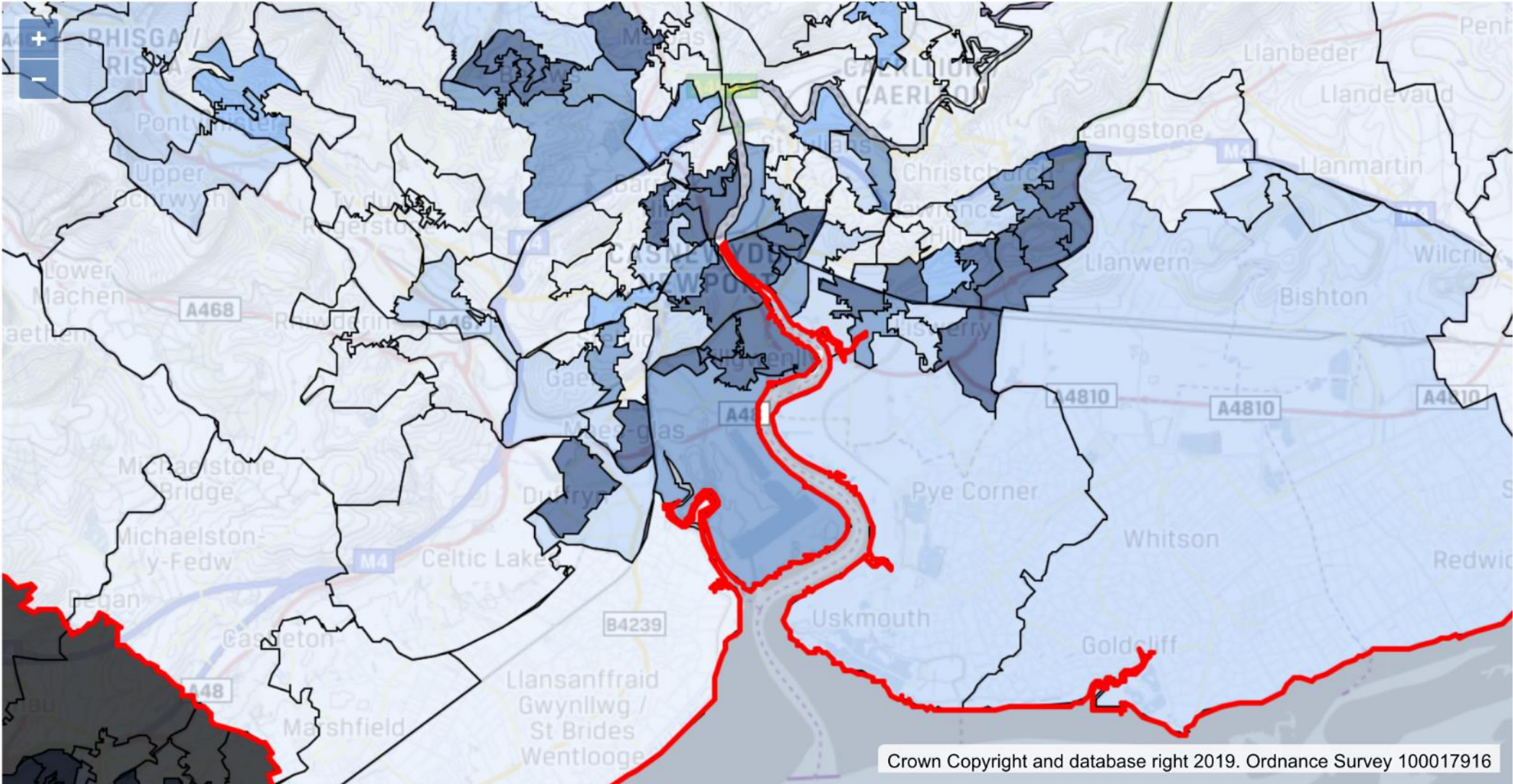
TM KETLAK

KORONAVÍRUS
ELLENI TRANSZLÁCIÓS
LAKOSSÁGTÁMOGATÓ
AKCIÓ- ÉS KUTATÓCSOPORT

Aneurin Bevan Health Board



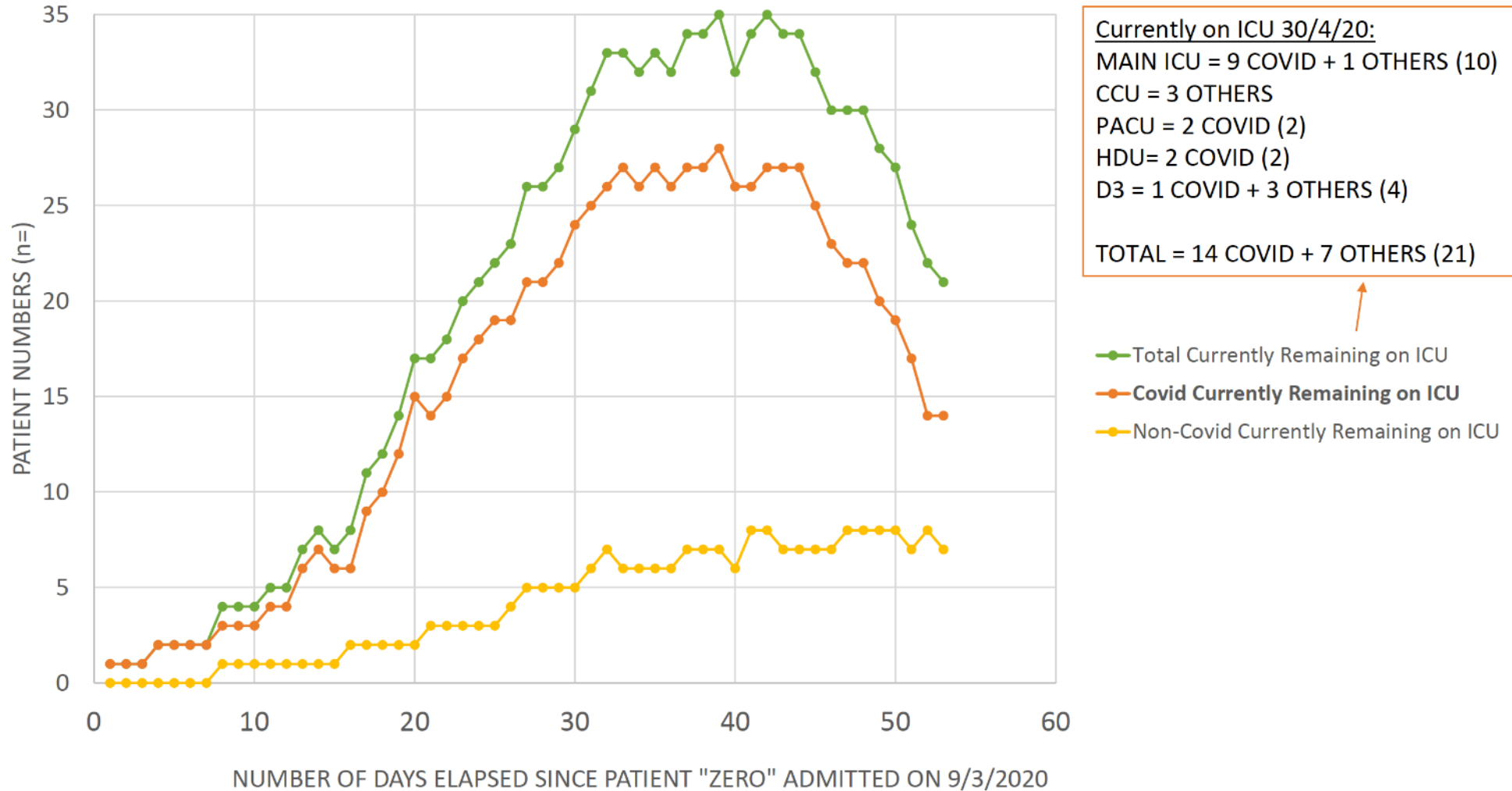
Royal Gwent Hospital



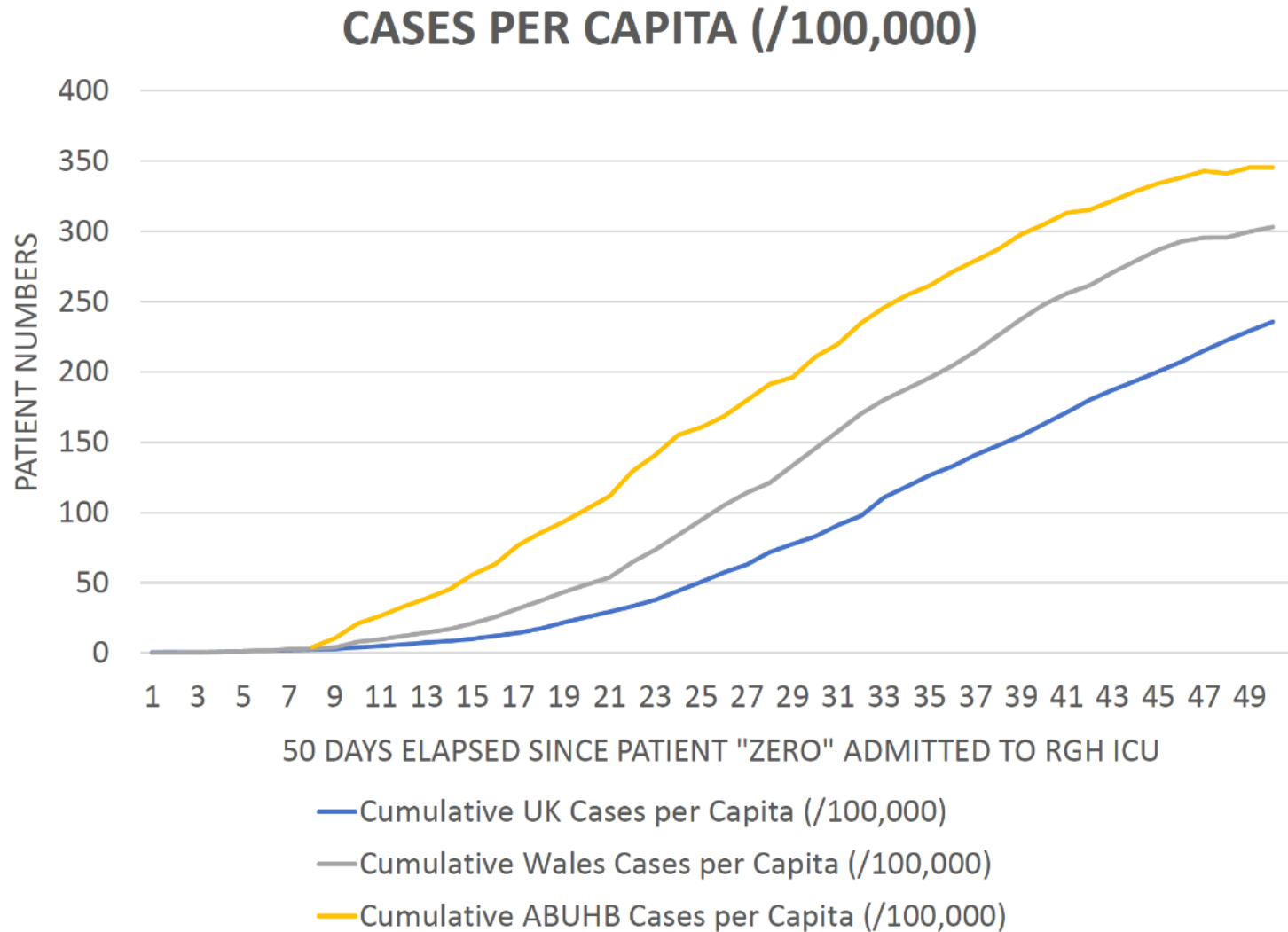
Crown Copyright and database right 2019. Ordnance Survey 100017916

COVID-19 Délkelet Wales-ben

ROYAL GWENT ICU COVID + NON-COVID CURRENTLY REMAINING ON ICU ON EACH DAY



COVID-19 Délkelet Wales-ben



- “Békeidőben” 12 lélegeztetett ágy, 6 szub-ító, 4 PACU az intenzíven, 6 CPAP-NIV a pulmonológián
- COVID-19 idején: csak lélegeztetett betegek, max kapacitás 42 ágy
- CPAP-NIV a pulmonológiai osztályon, max 30 ágyon

- Április 26 – Sürgősségi osztály
- 52 éves férfibeteg, egészségügyi dolgozó
- 1 hetes tünetek: láz, izomfájdalom, száraz köhögés, fejfájás, légszomj
- Otthoni SpO2: **75% !!!!!**
- Légzésszám: 26

Mit tegyünk?

- Megfigyelés otthon
- Osztályos felvétel
- ITO felvétel

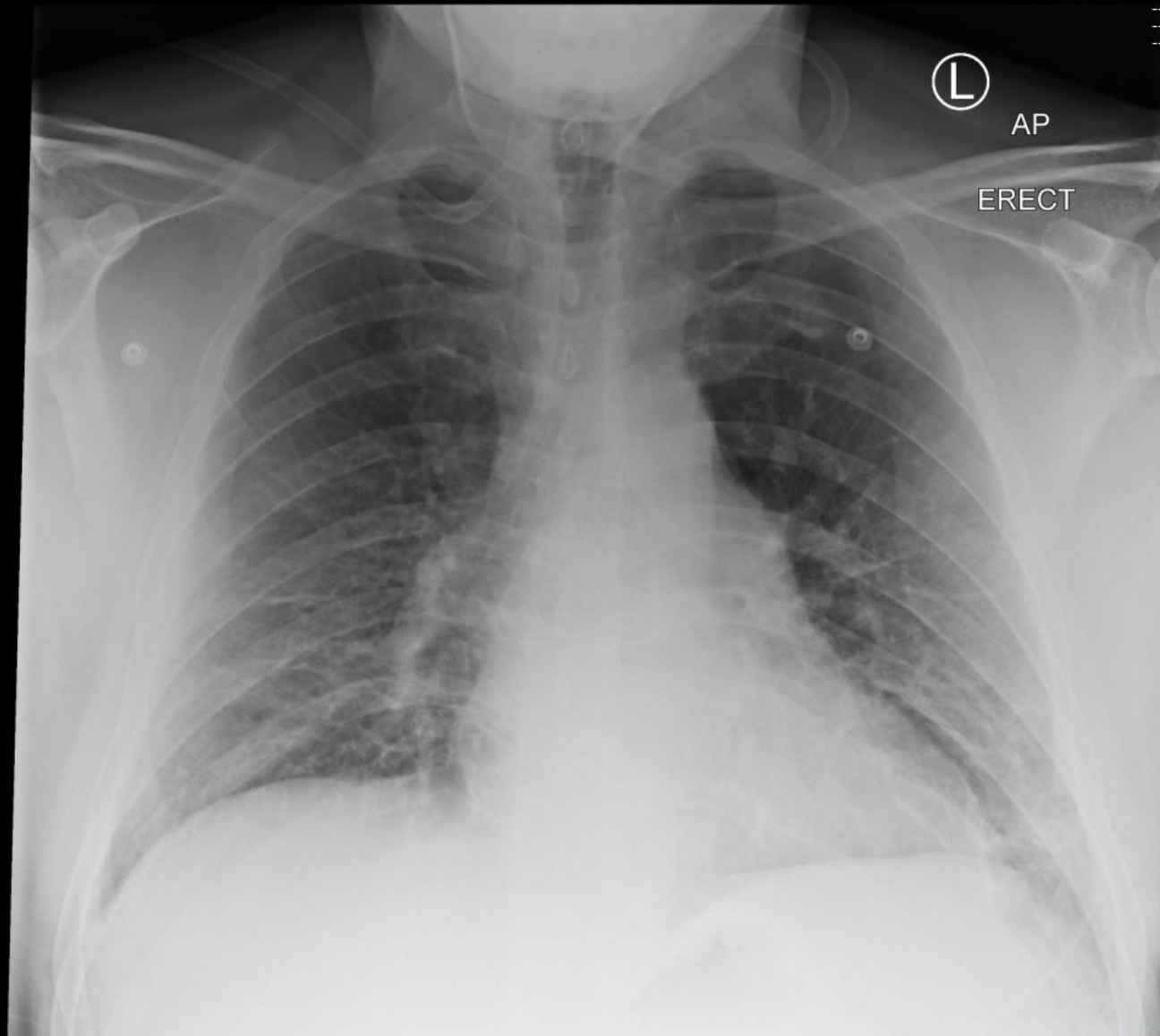
Mit tegyünk?

- Megfigyelés otthon
- **Osztályos felvétel**
- ITO felvétel

Jamie

52 YEAR
M

Royal Gwent Hospital
XR Chest
AP
26/04/2020 15:11:57
ABB14108284



Z: 0.34
C: 2048
W: 4096
Compressed 27:1
IM: 1

Mit tegyünk?

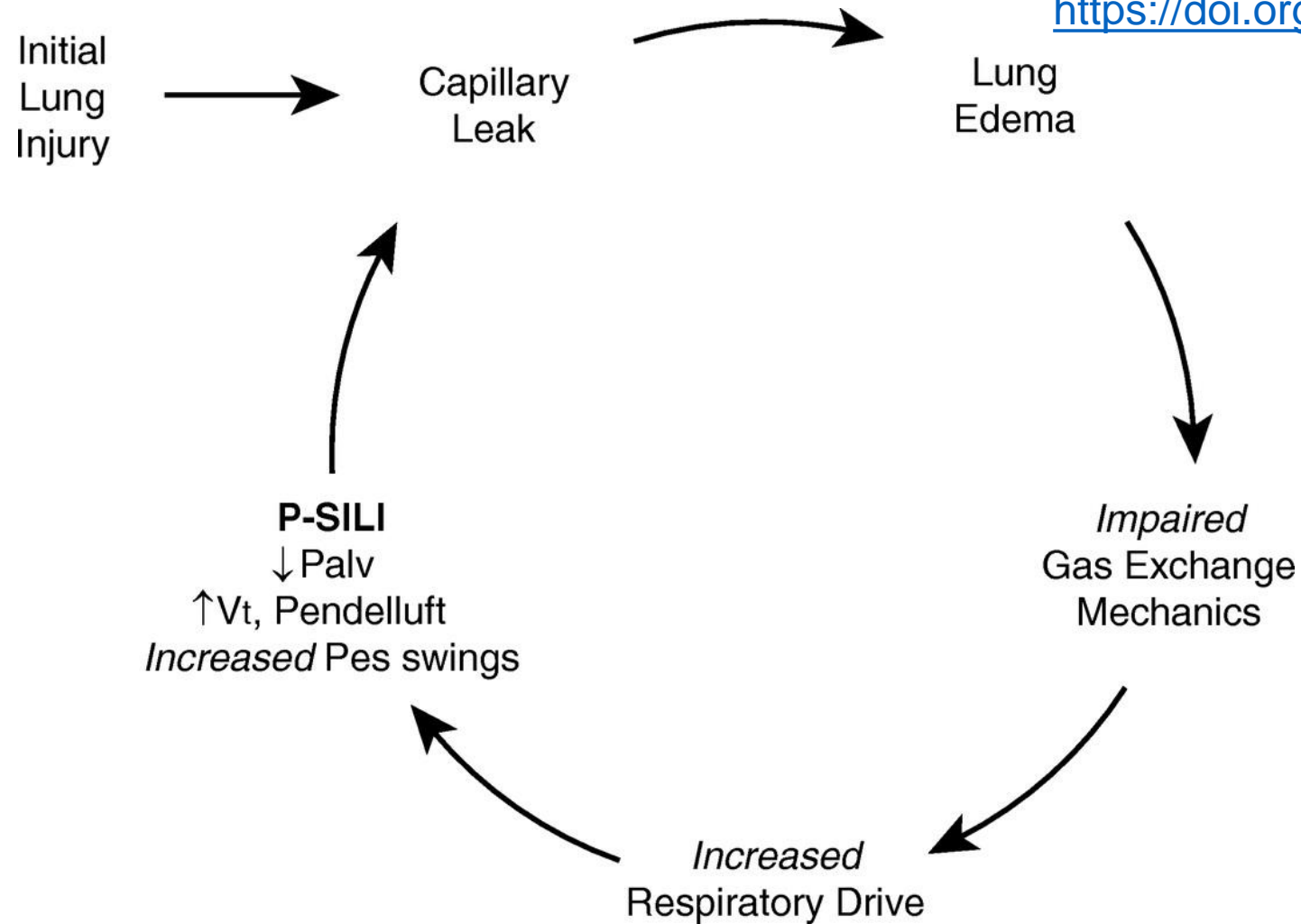
- O₂
- HFNO
- CPAP

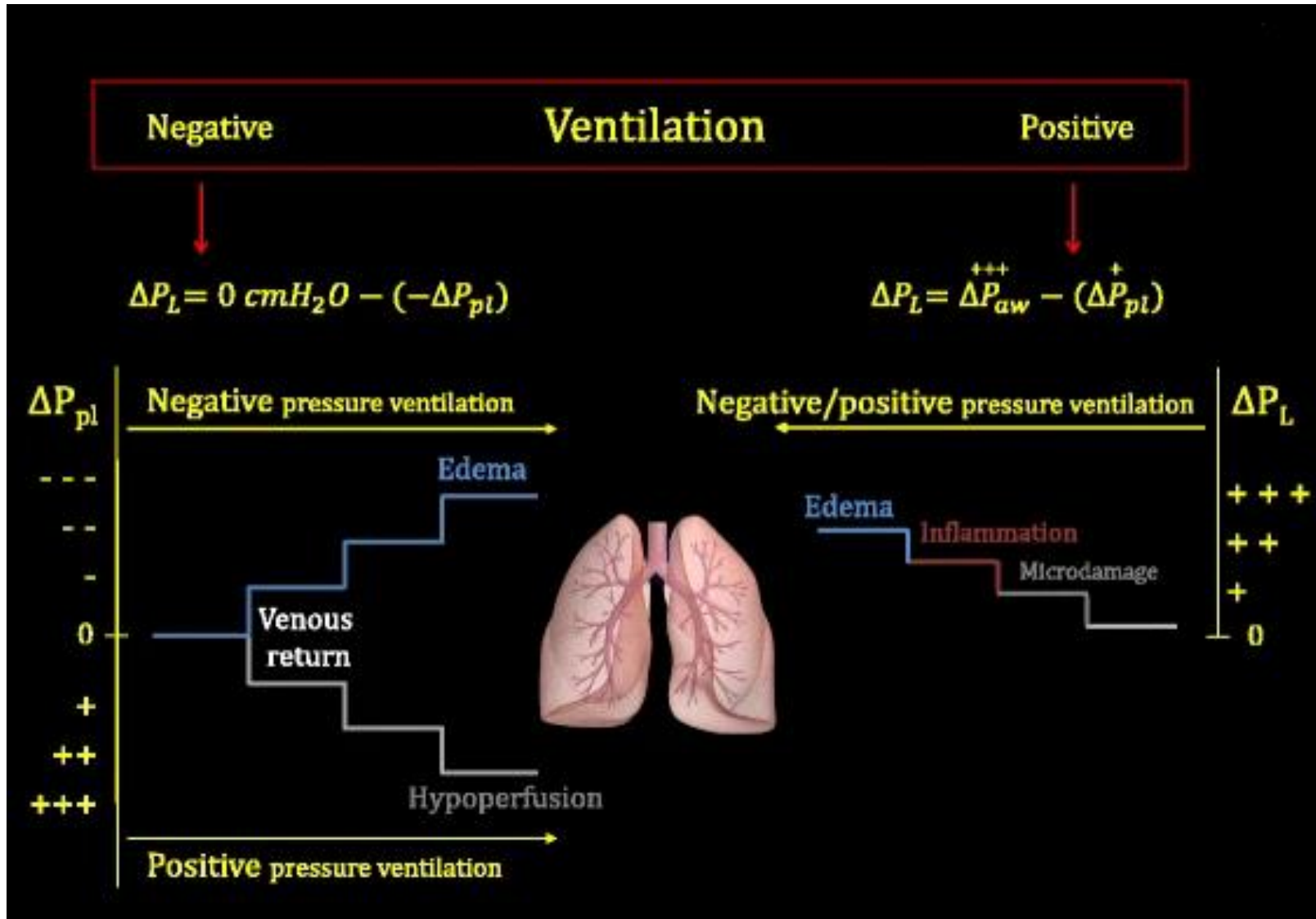
Mit tegyünk?

- O2
- HFNO
- CPAP

P-SILI

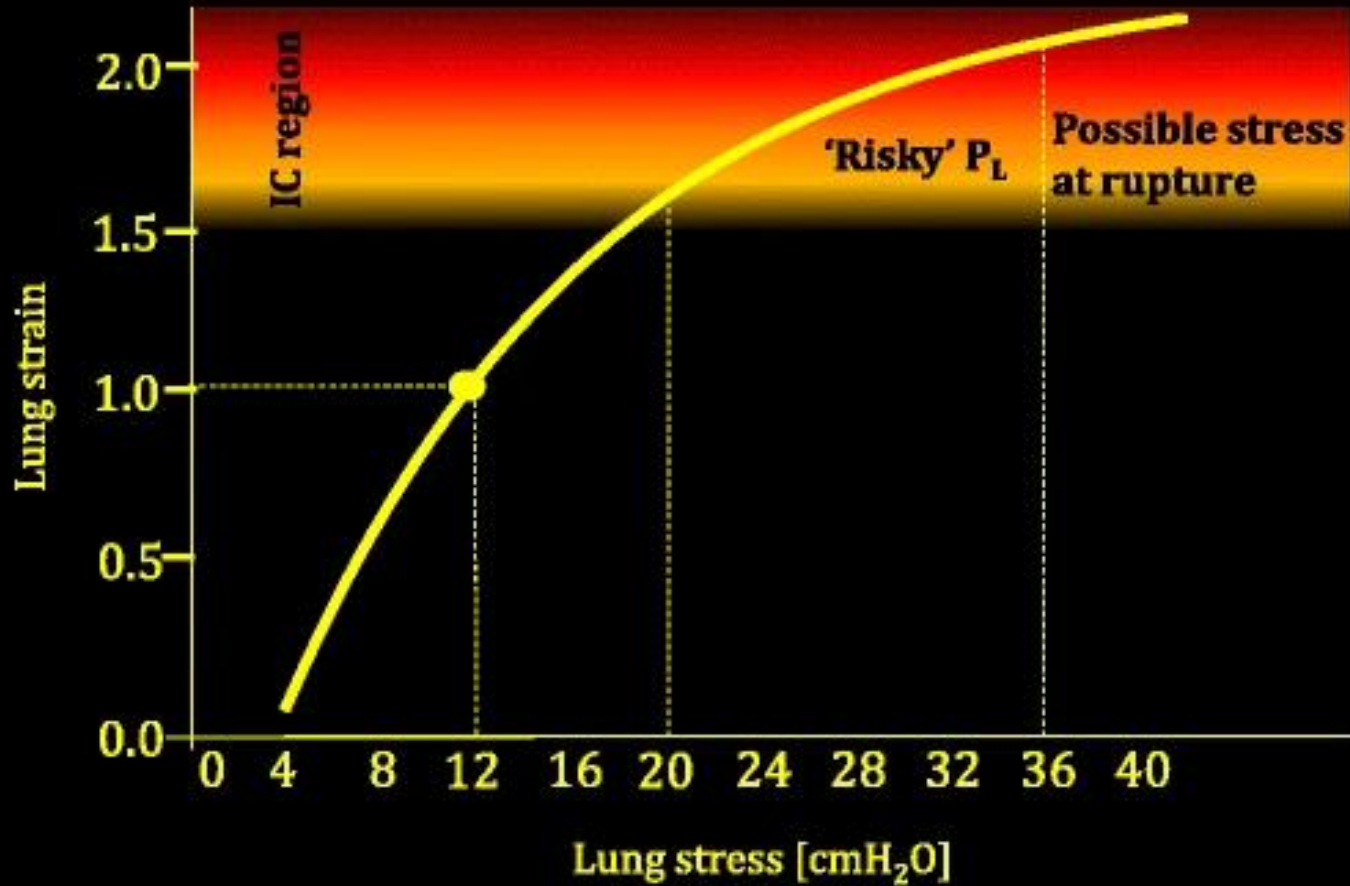
<https://doi.org/10.1164/rccm.201605-1081CP>





<https://doi.org/10.1186/s13054-017-1750-x>

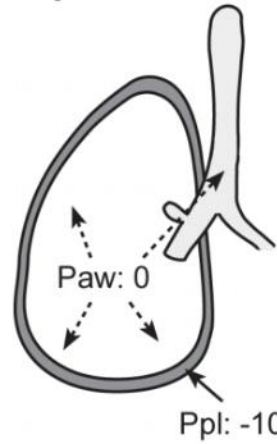
P-SILI



<https://doi.org/10.1186/s13054-017-1750-x>

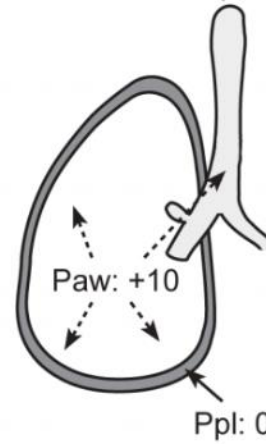
P-SILI

- A. *Lean, not intubated, normal lungs:
end-inspiration during normal tidal
breathing*



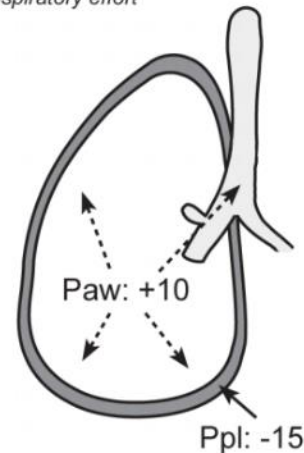
$$Ptp = 0 - (-10) = +10 \text{ cmH}_2\text{O}$$

- B. *Lean, intubated, normal lungs:
end-inspiration during positive
pressure ventilation while passive*



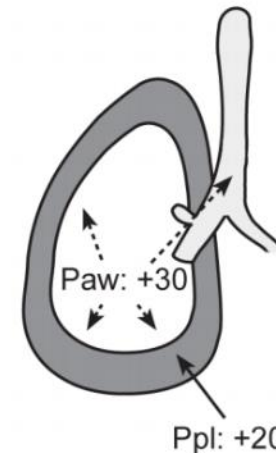
$$Ptp = +10 - (0) = +10 \text{ cmH}_2\text{O}$$

- C. *Lean, intubated, normal lungs,
end-inspiration during positive
pressure ventilation after forceful
inspiratory effort*



$$Ptp = +10 - (-15) = +25 \text{ cmH}_2\text{O}$$

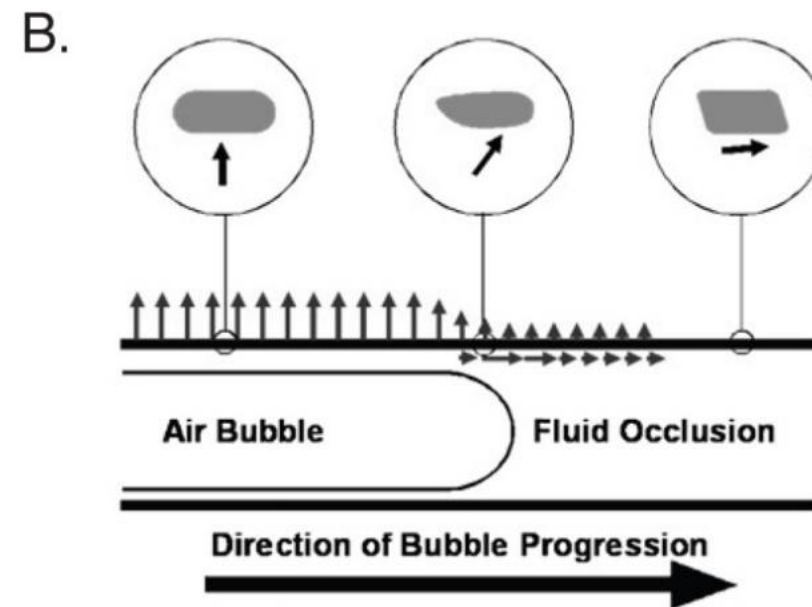
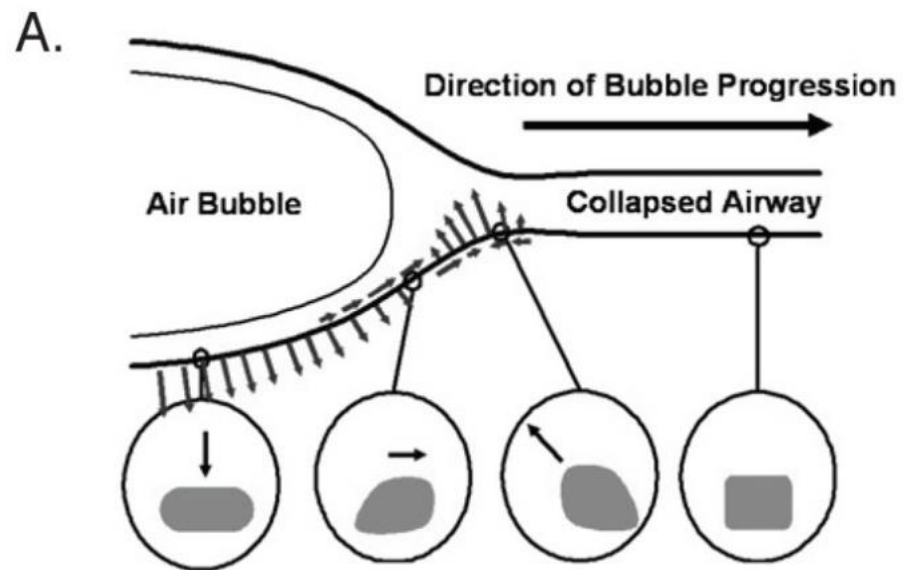
- D. *Obese, intubated, normal lungs:
end-inspiration during positive
pressure ventilation while passive*



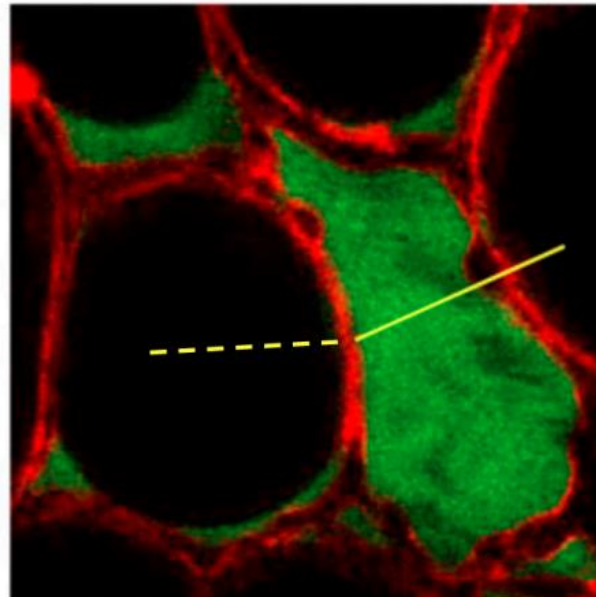
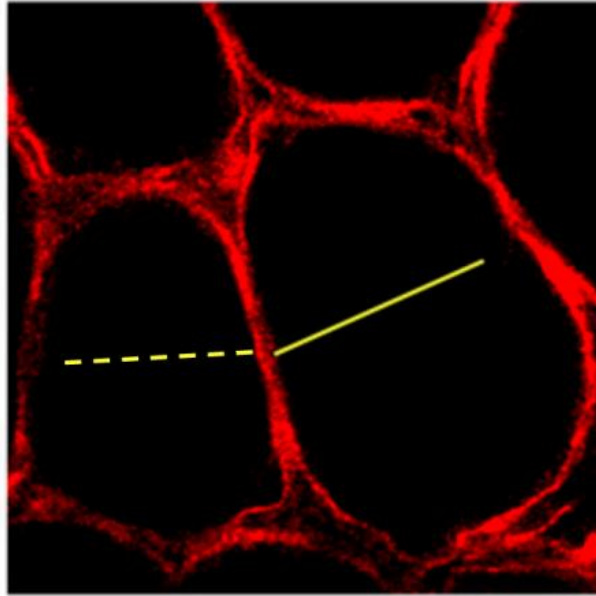
$$Ptp = +30 - (+20) = +10 \text{ cmH}_2\text{O}$$

<https://doi.org/10.12688/f1000research.20576.1>

<https://doi.org/10.12688/f1000research.20576.1>

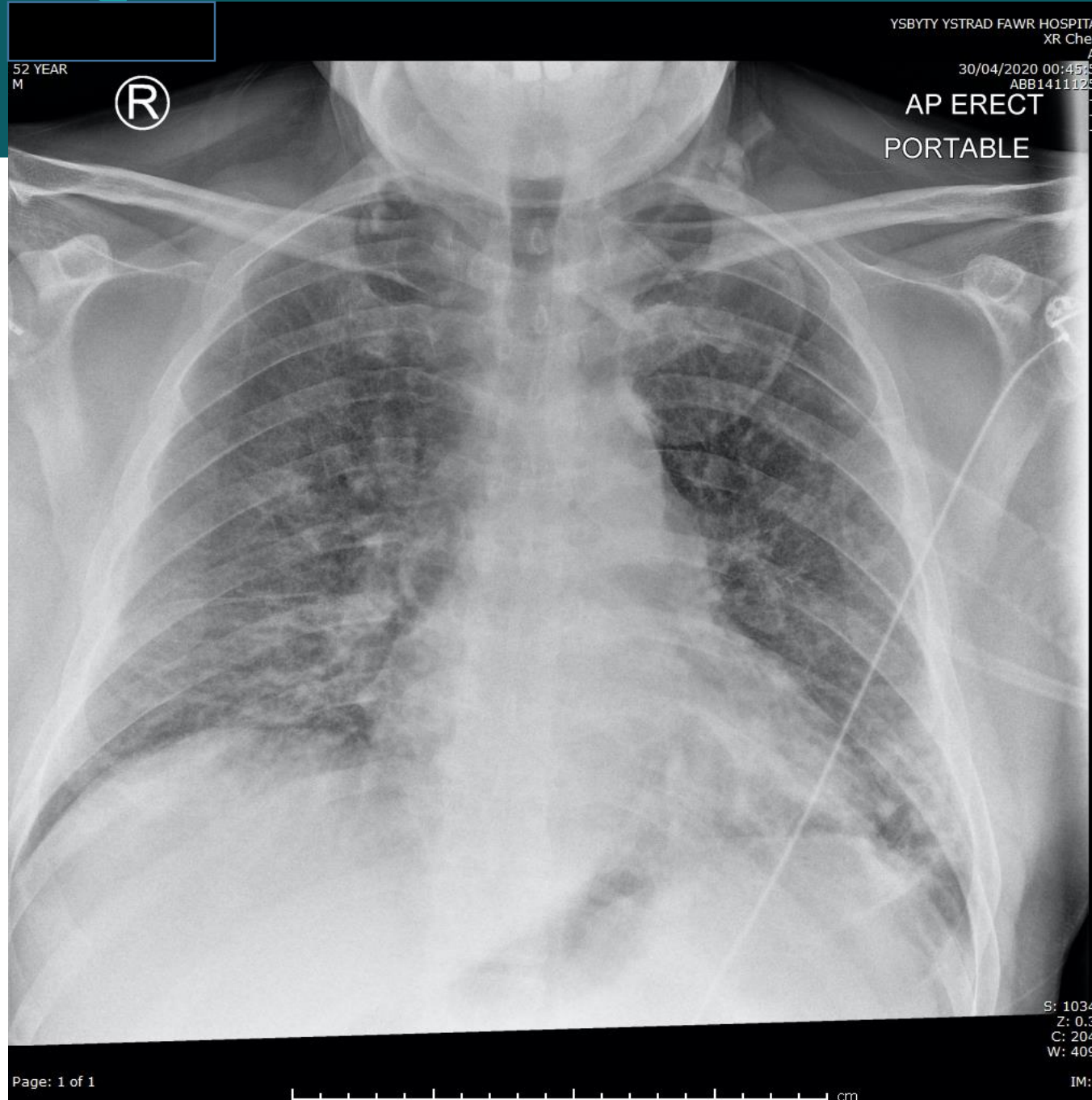


P-SILI



<https://doi.org/10.12688/f1000research.20576.1>)

Jamie



Mit tegyünk?

- O₂
- HFNO
- CPAP
- Intubáció

Jamie

